



Times of Shrewsbury



October 2022



SPRING LAKE RANCH CELEBRATES 90 YEARS

The History and Mission of Spring Lake Ranch

"The Ranch was created by Wayne Sarcka, an immigrant from Finland, and his wife, Elizabeth Man, from Long Island. Wayne had worked in youth camps during World War I with shell-shocked British soldiers in Mesopotamia. Elizabeth, whose brother suffered from schizophrenia, had worked as a social worker in New York settlement houses.

While hiking to Killington Mountain on their honeymoon, Wayne and Elizabeth came upon Spring Lake and were taken with its pristine beauty. A year later they purchased land that included Spring Lake and an old farmhouse. They went to work restoring the building and several summers later, with hopes of starting a summer camp, they took in several boys from New York City... Wayne knew the role of outdoor group work and play in helping young people develop their strengths and combat the trauma of war or a turbulent upbringing.

Elizabeth's strong faith in the value of shared family life was, she believed, exemplified in the centuries-old experience of the Gheel community in Belgium where, to this day, people with mental illness are taken into the homes of townspeople to share their lives. Their passion and obvious talents led... a friend and prominent New York psychiatrist to urge them to work with people with mental illness on their beautiful farm in Vermont... Soon others with mental and emotional struggles came, and Spring Lake Ranch Therapeutic Community had begun."

"For nearly a century, work therapy has been at the center of the residential treatment program. Daily tasks of feeding and caring for animals, planting seeds and harvesting vegetables, building barns and constructing furniture, or tapping trees and splitting firewood all provide structure and routine through meaningful work as they honor their **Mission:** "To support and empower people with mental health and substance abuse issues by providing opportunities to grow and thrive."

*Excerpts from Spring Lake Ranch website:
<https://springlakeranch.org>*

Books of interest at the Shrewsbury Library:

- *Giving a Lift in Time: A Finnish Immigrant's Story* by Anne Sarcka
- *Spirit, Steadfast Heart; The Life and Times of Elizabeth Man Sarcka* by Anne Sarcka

The Ranch, as it is affectionately known, was founded in 1932 by Wayne and Elizabeth Sarcka. According to their daughter, Anne Sarcka, Wayne originally thought working with horses would be a big part of the program, thus "Ranch" was included in the name. Past director Michael Wells reflected that "Wayne's imagination and excitement combined with Liz's unbelievable classic caring personality together with their friends (lots of them) made the Ranch what it is."

The Shrewsbury community has been strengthened not only by the existence of Spring Lake Ranch and its mission, but by the residents and staff who have come and stayed in the community. Michael says that in the 1970's students from Beloit, Antioch, and Bard Colleges were recruited to broaden the base of staff. Also, many returning Peace Corps volunteers came to the Ranch during the 1970's to 1990's in response to an advertisement in the Peace Corp newsletters.

Long time Shrewsbury resident Grace Brigham has learned a lot about celebrating from the Ranch; and she says "it hasn't taken much for them to have a celebration!" She remembers square dances, contra dances, barbecues, bonfires, Maypoles and Morris dancing, trooping thru the woods to bring back the Yule Log, cutting ice on the lake (we actually took the whole school up there one year for that!), Harvest dinners, Christmas caroling with flaming torches, trails that were made available to students for cross country skiing, and more!

Through the efforts of the Ranch 656 acres have been permanently conserved with the Vermont Land Trust and are available for hiking, swimming, fishing and cross-country skiing. Trails such as Sunnyside Loop and the Lake Trail Loop are maintained by the Ranch for all to enjoy.

After operating for almost 30 years as a private entity, the Ranch was incorporated in 1959 and became a non-profit in 1961. Interim Executive Director Rachel Stark says "thousands of residents have benefited over the years, and they are always seeking ways to enhance programming with meaningful work." Today there are 48 staff members and 25 residents.

Spring Lake Ranch therapeutic community has

- provided help and hope for many through their vision of healing
- strengthened and energized the Shrewsbury community
- secured enjoyment of the land that the Sarcka's first viewed

For this and much more, we can be thankful for the presence of Spring Lake Ranch in our community over the past 90 years.

~Article by Chryl Martin



**BOWMAN MANSION OPEN HOUSE
October 2 from 2-4pm**

We are looking forward to the Stewart Maple Marketplace Tap to Table gathering on Sunday, October 2. The event drew a large crowd to Cuttingsville last year, and it should be bigger and better this year. On that day last year we opened the doors of Laurel Hall and allowed visitors to tour John Bowman's mansion and grounds. We are going to do the same this year -- from 2 to 4 PM. Volunteers from the Shrewsbury Historical Society and other friends of Laurel Hall will be on site to guide the tours and provide information about the mansion and its history. If you are interested -- mark your calendars and pay us a visit that afternoon.

*Submitted by Barry Griffith
for the Laurel Glen Cemetery Association of 1894*

Employment Opportunity

Town of Shrewsbury is accepting applications for
Road Crew member

Work includes: plowing, ditching, road repair, roadside mowing, culvert work, chainsaw operation, equipment maintenance, and other duties.

Benefits include 100% Town paid Medical and Dental insurance

A clean driving record, CDL Class B License, and ability to pass drug/alcohol test required.

Contact Jamie Carrara @ 492-3656



October 14 at 7:00

Burkina Faso Peace Corp Experience

Elijah LaChance, a member of the Shrewsbury Library Board, will share stories and insights from his three years in Burkina Faso as a Peace Corps Volunteer. From cohabitating with scorpion-carrying spiders to learning three languages at once - from learning to take a bucket bath and eat "toh" to learning to help a sheep give birth - from planting over 16,000 trees just south of the Sahara Desert to organizing kids' camps in the country with the world's lowest literacy rate - and from days spent waiting for a bus that never came to appreciating a culture in many ways more accepting and more connected to the past than our own, Elijah will explain how three years in sub-Saharan West Africa changed him as a person, and how Peace Corps Volunteers continue to work to change the world today. His presentation will contain photos and videos from his time in-country, as well as masks, swords, artwork, and other items he brought home with him.

Don't miss this unique presentation from Elijah LaChance, now an attorney at Ryan Smith & Carbine in Rutland and husband of our Town Clerk.

The Times of Shrewsbury

The *Times of Shrewsbury* is published monthly from February through December, and compiled by volunteers from material submitted by residents with the goal of informing townspeople of what is happening in Shrewsbury. The views and opinions expressed in articles are solely those of the author and not necessarily those of the editors.

All submissions must be accompanied by the name of the submitting person and are printed at the editors' discretion subject to editing for length and clarity. Letters to the Editor exceeding 350 words will be subject to editing for length. Any information piece or informational political letters (without specific party or vote appeal) will be subject to the guidelines previously described.

A writer of a letter that names a Shrewsbury resident or organization in a critical manner must get copies to the resident or organization, and to the *Times* by the 10th of the month prior to publication or it will not run. If the named person or organization indicates in writing to the writer and to the *Times* that they choose not to respond, the letter will run. If the named entity responds, the response and initial letter will run in the same issue.

There is no charge for: jokes, poems, nature reports, family event announcements, or feature articles or letters that are not commercial.

Articles and Advertisements: Deadline for submission is 5pm on the 20th of the month prior to publication; exceptions will be announced in the prior month's *Times*.

Ads in the *Times* are for area businesses, local non-profit events, and local ballot election advertisements.

Best Formats: Articles: Word or as an email message with no formatting. Photos: jpeg. Ads: jpeg or Word document.

Monthly advertising fees and relative sizes:

Full page	\$90	(7.5"w x 9.5"h)
Half page	\$50	(7.5"w x 4.5"h or 3.5"w x 9.5"h)
Quarter page	\$10	(7.5"w x 2.5" h; or, 3.5"wx 4.5"h)
Business card	\$5	(3.5"w x 2"h)
Classified ad	\$3	(15 words or less)

Payment due by the 20th of the month prior to publication.

Chryl Martin ~ Rich Biziak ~ Victoria Arthur
Times of Shrewsbury, P. O. Box 373, Cuttingsville, VT 05738

Email: shrewsburytimes@gmail.com Online: <http://www.shrewsburyhistoricalsociety.com>

SHREWSBURY COMMUNITY CALENDAR

Sept 24	9am	*Annual Book Sales under the tent at the Library
Sept 25	7pm	*Science Book club via Zoom
Sept 30	7pm	*Making the Most of Shrewsbury Winters program at the Library
Oct 1	5:30-7:30pm	*Chili Cook Off at Pierce's Store (Rain or Shine)
Oct 1&2	10am-5pm	Vermont Crafts Council Open Studio Weekend
Oct 2	2-4pm	*Bowman Mansion Open House
Oct 7		*Taxes Due
Oct 7	7pm	*Young Adult author Claire Andrews to speak at the Library
Oct 11	6pm	*Shrewsbury Flood Hazard Area, River Corridor, Zoning and Subdivision Regulations Hearing
Oct 14	7pm	*Elijah LaChance to speak on his Burkina Faso Peace Corps experience at the Library
Oct 16	2-3:00pm	*Kids can read to Faith the dog at the Shrewsbury Library (see information)
Oct 16	4pm	*Famous Books Book Club meet at the Library
Oct 21	5-6:30pm	*Community Take out Lasagna Dinner at the Meeting House, 88 Lottery Road
Oct 23	4pm	*Science Book Club meet at the Library
Oct 28	5:30-7pm	*Kids Halloween Party at the Library
Nov 6		*Daylight Savings time ends

*see elsewhere in newsletter for details

TIMES OF SHREWSBURY
online at
www.shrewsburyhistoricalsociety.com



Deadline for submission to *Times of Shrewsbury* is by 5:00pm on the 20th of each month.

REGULAR MEETINGS and EVENTS

Board of Selectman Meeting	1 st & 3 rd Wednesdays – 6:30pm at Town Office
Bone Builders	Tuesdays & Thursdays – 10am at Meeting House
Development Review Board	4 th Wed -7pm at Town Office; check town website for agenda
Library Trustees Meeting	2 nd Tuesday – 7pm at Shrewsbury Library
Mill River Unified Union School Board Mtg	1 st Wed 7pm @ MRHS & 3 rd Wed. 7pm location TBA
Planning Commission	2n & 4th Tuesdays 7pm at Town Office
Religious Society of Friends (Quakers)	Sundays – 10am via Zoom; contact wildernessfriends@gmail.com
Shrewsbury Community Church	Sundays – 10:30am - Worship service and Kids Funday Program
Shrewsbury Conservation Commission	2 nd Tuesday – 5:15pm at 450 Frank Lord Road until further notice.
Shrewsbury Historical Society	Open Sundays 1-3pm until October 30
Shrewsbury Historical Society Museum	Open Sundays 1-3pm until October 30
Shrewsbury Singers	Currently taking a break
Shrewsbury Sno-Birds	2 nd Tuesday – 7pm at Southside Steakhouse in Rutland
Shrewsbury Volunteer Fire Department	Thursdays – 7pm at the Cuttingsville Station

Shrewsbury Town Website: www.shrewsburyvt.org

Clerk's Office	492-3511 Mon – Thurs 9am – 3pm; Closed Friday
Town Garage	492-3656 (Follow prompts to report roadway blockage on non-work days)
Listers	492-2009 available by appointment
Treasurer's Office	492-3558 Monday 9am-11am
Transfer Station	Sunday 8am-4pm ~- Wednesday 12noon-6pm
Library	492-3410 Hours: Mon 10am-12noon; Tues 7-9pm; Wed 10am-5pm & 7-9pm; Thurs 7-9pm; Fri 10-12noon; Sat 10am-12noon
Meeting House	492-6050 Reservations: 492-3361 or julanne@vermontel.net
News Flash Email:	vtbenbeano@gmail.com or benbeano@vermontel.net [Urgent and reminder news info]

Cuttingsville Post Office 492-3585 Window Hours Mon-Fri 7:30am-10:30am & 11:30am-2:30pm; Sat 8am-11am.

Lobby Hours Mon- Fri 7:00am-7:00pm and Sat 7:00am-4pm

Burn Permit: Forest Fire Warden Kevin Brown	802-345-8668 or, Deputy Fire Warden Al Ridlon, Jr. 802-282-3642
Animal Control Officer: Vacant (Contact a Selectboard member)	1 st Constable: TBA Game Warden: Tim Carey 793-2776
Emergency Management Aaron Korzun	492-3362 Green Mountain Power outage 1-800-451-2877
Medical-Police-Fire Emergency Dial 911	Ambulance 773-1700 Rutland Hospital 775-7111 [Updated 10/17/22]

SHREWSBURY SELECTBOARD MINUTES

The Selectboard meets the 1st and 3rd Wednesday at 7pm at the Town Office.

September 7, 2022: Minutes of Selectboard Meeting

Present at meeting: Selectboard members: Francis Wyatt, Steven Nicholson. Auditor: Rich Biziak. Town Clerk: Megan LaChance. Transfer Station Attendant: Paul Young

Members of the Public: Brock Ott, Brian Ott, Nathan Porter, Damon Ott, Drew Ott, Marc Cimonetti.

The meeting was convened at 6:30 PM

Agenda: Motion made by S. Nicholson to follow the agenda with the following additions: Transfer Station issues and Town Auditors report. F. Wyatt seconded. All in favor, motion approved.

Kinsman Hill Repeater: Brian Ott asked that the lease agreement increase from \$100 per year to \$1,000 per year for the lease of the 500 sq ft for the radio repeater on Kinsman Hill and to only give a lease for one year at a time. He wants to keep his options open to possibly locate a cell phone tower on Kinsman Hill.

Town Office Security: A list needs to be compiled of who needs to know the code for the office door lock before the code is changed. Megan LaChance will begin to assemble a list. The church needs to be reminded to lock the door.

ARPA Funds: Received an email regarding a business owner that is interested in some of the ARPA funds due to loss of income due to COVID. The Town's first priority is for town infrastructure, such as culverts.

Shrewsbury Day: The Sheriff's Dept. will be on hand on Shrewsbury Day.

New Business: Town Audit: The accounting firm wants to have a first meeting before signing a contract. S. Nicholson made a motion to rescind the one-year appointment for Zoning Administrator since she was already appointed to a 3-year term.

S. Nicholson made a motion to revise the appointment of Michelle Greene to one year as auditor instead of the 3 years, since we are only authorized to appoint for one year. F. Wyatt seconded. Approved.

F. Wyatt made a motion to set the term for one of the Listers to a 2-year term at the next election, and then revert to a 3-year term, so that there will be only one Lister running for the office in any one year. S. Nicholson seconded. Approved.

S. Nicholson made a motion to appoint Bert Potter as the SWAC Representative until March 7, 2023. F. Wyatt seconded. Approved.

Need to check status of Pound Keeper.

Regional Emergency Management Committee – Jack Perry's term expired in 2022. Is this committee still active?

S. Nicholson made a motion to appoint Laura Black and Aaron Korzun to Regional Planning Commission Representative and Alternate, respectively. F. Wyatt seconded. Approved. S. Nicholson made a motion for an interest transfer of \$4.68 from the General Fund to the Reserve Fund. F. Wyatt seconded. Approved.

Transfer Station: The Selectboard will look into paying the Transfer Station Attendants weekly instead of twice a month, which will require authorizing Bert Potter to sign off on their hours and create orders weekly.

Review Minutes: S. Nicholson made a motion to accept the 8/17/2022 Selectboard meeting minutes. Seconded by F. Wyatt. Approved.

Review Orders: S. Nicholson made a motion to approve Selectboard Orders #9 for \$5,524.71 and Road Orders #9 for \$31,993.39. Seconded by F. Wyatt. Approved. F. Wyatt made a motion to correct Selectboard Orders #4A to \$1,339.75, Selectboard Orders 8A to \$1,079.06 and Road Orders #3 to \$14,850.26. Seconded by S. Nicholson. Approved.

Adjourned at 9:15 PM

Respectfully submitted, Francis Wyatt

These minutes are unofficial until approved by the Selectboard at the next regularly scheduled meeting.

Editor's Note: The minutes have been edited for brevity but not content. For complete minutes, go to the Town website www.shrewsburyvt.org

NEWS FROM TOWN TREASURER

TAXES DUE OCTOBER 7

Payments can be mailed, placed in the drop box at the town office (to the left of the front door), made by credit card online at www.officialpayments.com (by October 5), or delivered to the town office. If you plan to pay in cash, please deliver directly to the treasurer.

Town Treasurer regular hours are every Monday from 9am to noon.

Additional days/times available for payments:

Saturday, October 1 10:00am to 12:00pm
Thursday, October 6 12:00pm to 3:00pm
Friday, October 7 12:00pm to 7:00pm

If you have not filed your Homestead Declaration, the state website at www.tax.vermont.gov/property-owners will direct you to the proper form and the Property Tax Adjustment form is also available. If you qualify, DEADLINE is October 15.

State of Vermont Tax Information for contact is:

Phone: (802) 828-2865 Toll Free: (866) 828-2865
Email: tax.individualincome@vermont.gov
Fax: (802) 828-2720

Thank you, and call if you have questions.

Linda McGuire, Treasurer
Town of Shrewsbury
9823 Cold River Rd, Shrewsbury, Vermont 05738
Shrewsburytreas@vermontel.net
Town Office 492-3558

SHREWSBURY MOUNTAIN SCHOOL

Important Dates:

Oct 5: Picture Day! (Picture make up date: 10/28)
Oct 6 and 7: Parent/Teacher Conferences
Oct 10: Indigenous People's Day - No School

Commitment to Sustainability: We have had two garden work days and prepared our garden and raised beds for planting this Spring. We have also planted 12 fruit trees on our campus with the ReTree US organization. We are very grateful for our continued partnership with SAGE and the meaningful learning experiences our students are receiving about sustainability. We are also hoping to get donations of stainless steel flatware to use for our meal service in our school.

PTO Meeting: The PTO is hosting its first meeting of the year and would love to have some new members and new ideas! Shrewsbury is such a vibrant community and the PTO needs your help to support enrichment opportunities for our school community. If you have some ideas that you would like to share, want to become involved with our current activities, or are simply interested in learning more about the PTO, please come to our meeting on Wednesday, September 28th from 6:30-8:00 at the school library. We would love to see some new faces there!

After School Program : We are actively seeking a new director for our Afterschool Program. Please have any interested applicants contact me!

I hope that you have a beautiful Fall season filled with apple picking, leaf gazing, and consuming tons of pumpkin spice!

If you have any questions or concerns, please contact me at 802-786-3995 or at kcimonetti@millriverschools.org.

~Kristin Cimonetti, Principal

Calling All Photographers

The Shrewsbury Board of Auditors is soliciting photographs of Shrewsbury life during the current year for the town's 2022 Annual Report.



If you would like your photograph to be part of the historical record of our town, please submit your picture to the Board of Auditors for consideration.

Pictures of our town should be in one of the following categories: Historic Town Buildings, Landscape and Environment,

Agriculture, Town and Town Organization Events, Town Officers, and Kid's Events.

Submit your picture as a jpeg file and email it to auditshrewsbury@gmail.com no later than January 1, 2023.

Don't forget to provide captions identifying people, places, and events. Also, be sure to identify the photographer so we can give proper credit! The Board of Auditors will review the photos and select them based on applicability and space availability.

Thank you for your help with our Town Report!

Shrewsbury Board of Auditors

MILL RIVER UNION UNIFIED SCHOOL DISTRICT NEWS

Hard to believe that I'm writing the October Times article, but it's been that kind of a year.

All of the schools in the district are up and running. PTO's and Booster Clubs are meeting and hoping for parents to step up and join their efforts to expand opportunities for kids in their respective schools. Each school and classroom has spent a goodly amount of time building community rules and expectations. Ask your children what the expectations are in their classes. Sports teams have been formed and are busy with practices and games. If you enjoy watching, please check the online MRU athletic schedule or call your school's office to check the elementary schedules. The theatre program at Mill River has started prepping for their Fall productions in November- get ready to be wowed once again! There are so many things going on in our schools that I can't possibly list them all- check the event calendars. I say simply, come and be amazed by our kids.

In Board news, we have been busy reviewing our policies and comparing ours to the sample policies that the Vermont School Boards Association makes available. They are a great resource for examples of what we must have and what would be good to have with all of the legal citations in support of their suggested wording. The Finance and Building and Grounds committees will have their first budget meeting for the school year starting 7/1/23 this month. It is on the calendar for 10/4/22 at 4pm. We will be doing things a bit differently this year by starting at the building level, with principals working with their staff to develop a local budget and then combining these to see what that results in. Then adjusting those "wants" to what the board thinks our taxpayers will support. We may have separate articles on the ballot in March to support needs and wants for the district. Come to a meeting to affect the changes you support. If you would like to be notified of all board and committee meetings, you can call Ann Dages at the Central Office (802-786-3998) to be put on the email list for all meeting warnings. We meet as a full board on the first and third Wednesdays and committees meet 1x/month on various days. You are welcome to come and participate- Please come and *get involved*. Call your board members, if you have questions.

Submitted by Adrienne Raymond,
MRUUSD board member, 802-492-3578

Steven Nicholson for Justice of the Peace

I am running for the office of Justice of the Peace as an Independent and am asking for your vote at the November 8th general election. My goal is to continue the non-partisan running of elections that I have seen over the many years I helped as a vote counter and more recently as a member of the Board of Civil Authority.

Sincerely,
Steven Nicholson

Paid Political Advertisement

Shrewsbury Planning Commission
Notice and Warning of Public Hearings
Tuesday, OCTOBER 11, 2022

Shrewsbury Community Meeting House, 88 Lottery Road, Shrewsbury, VT

Remote Attendance: <https://us05web.zoom.us/j/9604851589?pwd=NUs2bm90TW9laXdmV0N6WTBTNEZwZz09>
Meeting ID: 960 485 1589 Passcode: 9w17w4

A Public Hearing for the Town of Shrewsbury Flood Hazard Area and River Corridor Regulations-2022 will be held at 6:00 PM on October 11, 2022.

The proposed Town of Shrewsbury Flood Hazard Area and River Corridor Regulations - 2022:

- ◇ Will replace the Town of Shrewsbury Flood Hazard Area Regulations – 2011.
- ◇ Will incorporate the standards developed by and adopted by State of Vermont in its regulation of floodplains and river corridors which exceed National Flood Insurance Program (NFIP) minimum requirements.
- ◇ Will allow Shrewsbury to receive an additional 5% Emergency and Relief Funds (ERAF) from the State of Vermont.
- ◇ Will implement the goals, policies, and recommendations in the current town plan;
- ◇ Will avoid and minimize the loss of life and property, the disruption of commerce, the impairment of the tax base, and the extraordinary public expenditures and demands on public services that result from flooding-related inundation and erosion;
- ◇ Will ensure that the selection, design, creation, and use of development in flood hazard areas is accomplished in a manner that minimizes or eliminates the potential for flooding, loss of life, or damage to property in a flood hazard area, and does not impair stream equilibrium, floodplain services, or the river corridor;
- ◇ Will manage all flood hazard areas designated pursuant to 10 V.S.A. Chapter 32 §§ 751 and 753, 24 V.S.A. Chapter 117 § 4424, and the local hazard mitigation plan; and make the Town of Shrewsbury, its citizens and businesses, eligible for federal flood insurance, federal disaster recovery funds, and hazard mitigation funds as may be available; and
- ◇ Will protect the river corridor, providing rivers and streams with the lateral space necessary to maintain or reestablish floodplain access and minimize erosion hazards through natural, physical processes while allowing for wise use of property within river corridors that minimizes potential damage to existing structures and development from flood-related erosion.
- ◇ *Draft copies of the Flood Hazard Area and River Corridor Regulations-2022 are available at the Town Office and are posted on the Town website.*

A Public Hearing for Amendments to the Town of Shrewsbury Unified Zoning & Subdivision Regulations will be held at 7:00 PM on October 11, 2022.

The proposed amendments to the Shrewsbury Town Unified Zoning & Subdivision Regulations will:

- ◇ Further the values and goals of the Shrewsbury Town Plan's purpose and objectives to protect Shrewsbury's rural nature, scenic quality, and conservation of land and natural resources.
- ◇ Provide for affordable housing,
- ◇ Allow for coordinated development of future land use.
- ◇ *Draft copies of the proposed Unified Zoning & Subdivision Regulations-2022 are available at the Town Office and are posted on the Town website.*

Proposed amendments include: Section 207 – High Elevation Districts (change to High Elevation Residential District and Preservation District); Section 208.3 – Surface Waters Overlay; Section 402.2 Boundary Line Adjustment; Section 503- Accessory Dwellings; Article VII- Dimensional Requirements; Appendix A – Physical Descriptions of Zoning Districts; and Zoning Maps (updates).



SHREWSBURY VOLUNTEER FIRE DEPARTMENT

We are the Shrewsbury Volunteer Fire Department, but we respond to and assist at all kinds of emergencies – not just fires. We often note the importance of our mutual aid network with neighboring fire departments when the need arises. An excellent case study in point arose on Friday evening, August 26 when severe storms passed through Rutland County. Monitoring our radios, SVFD learned that high winds had caused a barn to collapse on the Creek Road in Clarendon. Per CFD protocols, the Wallingford and Rutland Town Fire Departments closest to it were automatically called to assist. Once it was clear that additional help was needed, Shrewsbury and other towns were summoned. SVFD was ready.

The damage caused by the storm was not limited to Clarendon. Rutland Town's Department also had to deal with a fatal accident on Route 7 a few miles north of that. East Wallingford responded to a call on Sugar Hill. On their way to Clarendon, firefighters from Tinmouth discovered and reported a house fire on Route 140 in Wallingford. One fire truck from Shrewsbury with Captain Russ Carrara in command went directly to the Wallingford fire and extinguished that blaze. Chief Phil Severy and his crew responded to the emergency on the Creek Road. It was a night in which much help was needed -- and provided -- in multiple places at the same time.

No human injuries were reported in the barn collapse at the Bromley Farm emergency, but it was a devastating scene nonetheless. About 60 cows were trapped inside when the structure collapsed. Farmers from around the County quickly appeared to assist the firefighters on scene. They worked long into the night. The responders rescued as many cows as they could, but sadly 20 did not survive. Fundraising efforts are underway to support the Bromleys in their loss. We offer them our condolences.

In other news, briefly: Mark Youngstrom came to SVFD's Cuttingsville Station to inspect the property and provide suggestions about how the building might be adapted to accommodate twenty-first century fire trucks. Mark's expertise and review of options was very helpful. We will elaborate in a future issue of the Times.

Last but not least, we want to thank our fellow citizens and members of the committee who put together a wonderful Shrewsbury Day event on September 17. Some of our volunteers had other commitments that day, but those of us who were able to participate had a great time. Our Fire Department always loves a parade! Special thanks to Grace Brigham and the Shrewsbury Historical Society for the wonderful sign and tribute commemorating 2022 as the 70th anniversary of the Shrewsbury Volunteer Fire Department. You can read more about those decades in the next issue of the Times. In the meantime: be smart, enjoy the foliage and

STAY FIRE SAFE.

Submitted by Barry Griffith

The Best For Your Family



WHY PAY MARKET PRICES WHEN YOU CAN COME TO THE FARM!

Quality food=better health!

100% Grassfed grass finished beef
and our Vermont Maple Syrup

FARM STORE HOURS

Wednesday thru Monday • 10am-5pm
CLOSED Tuesday - Call for appointments

Directions From:



Rutland: Left off VT RT 103 just 2.5 miles - on the right

Cuttingsville: Just 2.1 miles up Town Hill Rd, right on Lincoln Hill

2450 Lincoln Hill Road, Shrewsbury VT. 05738

SmithMapleCrestFarm.com • 802-492-2151 • maplecrest.info@gmail.com

We Ship Syrup All Over The USA

Wallingford Town Hall Concert Series

Presents

DaddyLongLegs

Wednesday, October 26 @ 7pm



A bluegrass trio, *DaddyLongLegs*, will be performing at Wallingford Town Hall on Wednesday, October 26 at 7:00 p.m. The band features three of Vermont's finest acoustic players. Violinist David Gusakov was a member of Burlington's progressive bluegrass pioneers Pine Island the gypsy-jazz outfit *Swing Noire*. Banjo specialist Rick Ceballos and multi-instrumentalist Matt Witten are well known in Vermont traditional, old-time and bluegrass circles. The group performed at Wallingford Town Hall twice in the past to rave reviews!!

Suggested donations of \$10 to \$15 at the door.

PLEASE SUPPORT LOCAL LIVE MUSIC

SHREWSBURY LIBRARY

Library News Submitted by Joan Aleshire

LIBRARY & FOOD SHELF HOURS

Monday 10am-12pm

Tuesday 7pm-9pm

Wednesday 10am-5pm and 7pm-9pm

Thursday 7pm-9pm

Friday 10am-12pm

Saturday 10am-12pm

MASKS are no longer required. Please wear one if you want to, and please don't visit if you're not well!

We're very pleased to announce that MICHELLE GREENE has been elected to the Library Board of Trustees. Michelle brings her extensive knowledge of community libraries to Shrewsbury; we welcome her involvement!

MANY THANKS to everyone who helped make OUR ANNUAL DINNER & STREET DANCE a fine evening of friends and fun: DONNA and everyone who cooked and served the hot dogs; BOB and Pierces' Store for the 802 Ice Cream Pops; and MARCOS and the great COMMUNITY BLUES BAND: AARON, DAVE, MIGUEL, DIRK!

MANY THANKS, TOO to the Library Children's Committee — DONNA, DORIS, SARAH, and ERIN for setting up the Library Table at Shrewsbury Day, with children's books and bookmarks to give away. Special thanks to GEORGE PERRY for helping clean up afterwards!

Coming Events:

SEATING LIMITED TO 25; PLEASE E-MAIL to SAVE a PLACE: joanaleshire@vermontel.net.

Friday, September 30 @ 7pm: "MAKING THE MOST OF SHREWSBURY WINTERS." Please bring your stories, survival tips, problems, solutions, and ideas for future fun! Inspired by a Shrewsbury Times article.

Friday, October 7 @ 7pm: CLAIRE ANDREWS, YA author, will read from her new YA novel, and discuss the process of publishing her work. (See ad in this issue)

Friday, October 14 @ 7pm: BURKINA FASO with ELIJAH LACHANCE: Former Peace Corps volunteer and current Library Trustee, ELIJAH will talk about his experience in this fascinating country, and its past and present.

Continuing Programs:

Sunday, October 16 @ 4pm: FAMOUS BOOKS BOOK CLUB: Edith Wharton's New England classic, *Ethan Frome*. Books will be available at the Library.

Sunday, October 23 @ 7pm: SCIENCE BOOK CLUB. Next book: *Remember: The Science of Memory and the Art of Forgetting* by Lisa Genova

New Books include:

- **The Marriage Portrait* by Maggie O'Farrell. Suspense and romance in this new novel by a master of historical fiction, based on a true story from Renaissance Italy.
- **Outdoor Kids in an Inside World* by Steven Rinella: Helpful suggestions for activities that get kids off their screens.
- **What We Owe the Future* by William MacAskill: A meditation on how we can shape our legacy: environmentally and socially.
- **Fox Creek* by William Kent Krueger: A gripping thriller about an Indigenous detective, the latest in a popular series.
- **Say It Loud: Race, Law, and Culture* by Randall Kennedy: clear-eyed, provocative essays by this Black professor at Harvard Law School.
- **Night of the Living Rez* by Morgan Talty: Life on Maine's Penobscot Reservation, told in linked stories by this gifted Indigenous young writer.
- **Life Between the Tides* by Adam Nicolson: A beautiful exploration of marine life in seashore tide pools.

New DVDs:

- **Where the Crawdads Sing*: The video version of the best-selling novel.
- **Summer of Soul (Or When the Revolution Could Not be Televised)*: The acclaimed documentary — part music film, part historical record — of the 1969 Harlem Cultural Festival, starring legendary Black artists.



From The Library Children's Committee:

We hope that you picked up a free children's book courtesy of the Shrewsbury Library at Shrewsbury Day.

Please save the dates for the following children's programs...

Read to Faith the Dog October 16 @ 2-3:30pm

Halloween Party October 28 @ 5:30-7pm

Holiday Movie Night December 9 (time tbd)

Additionally, we will need volunteers for the Halloween Party to make it successful. Please email Sarah Titterton at sarahjane@titterton.net or Donna Swartz at donnaswartz44@aol.com if you can help.



Hi,
My name is Faith. I'm a Therapy Dog in the Caring Canines Therapy Dog Club of VT.

Therapy Dogs help people through all situations. I go to Rutland Regional Medical Center and volunteer there. I love to bring smiles, receiving hugs and making a difference to the patients, staff members and the visitors that I meet.

I also go to a nursing home which is nice and I have been involved in Reading Programs in Elementary schools where the children read to me.

My home is right here in Cuttingsville with my nice human Ann Marie, you may have seen her around or know her. She's always walking me or she's at the library or at events. She's pretty nice, especially when she gives me treats.

I will be at the:

**Shrewsbury Library
October 16 at 2-3:30pm
for kids who would like to read to me**

(of course AnnMarie will be there as well). So come with a book or we can help pick one with you and meet me. See you then, Faith

(Submitted by Ann Marie Moody)



MAKING THE MOST of SHREWSBURY WINTERS

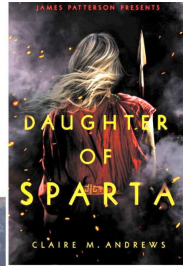
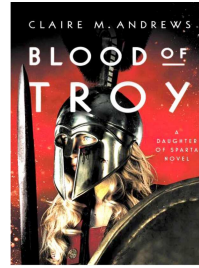
**FRIDAY, SEPTEMBER 30 @ 7pm
in the LIBRARY MEETING ROOM**

**NEWCOMERS,
OLD-TIMERS,
AND EVERYONE IN BETWEEN!**

PLEASE JOIN US for a CONVERSATION ABOUT
MAKING THE MOST OF SHREWSBURY WINTERS:

TIPS, STORIES, PROBLEMS & SOLUTIONS
WELCOME!

Space is limited, please e-mail
joanashire@vermontel.net to save a seat!



**October 7 at 7:00
local author Claire M. Andrews**

will be at the Shrewsbury Library to talk about her career as a young adult author, her writing process, and the challenges and rewards of the publication process. She will also read sections of her new book, "Blood of Troy," out this year, and sign copies of both of her books, including her debut YA novel, "Daughter of Sparta." While Claire has lived in Vermont for nearly a decade, she was raised in Alaska and Scotland, and she will discuss how all three of these places influenced her life and work, as well as where she drew inspiration for the world of Ancient Greece where she sets her published works. Questions will be encouraged, and young adults – and all fans of Claire's work – are particularly encouraged to attend.



A Gorgeous Night!

It was an absolutely gorgeous night for the Conservation Commission's Harvest Moon Celebration on Friday, September 9. A large turnout enjoyed telescopic views of the red moon, a walk through sunset meadows, great poetry readings ("the Highwayman came riding, riding, riding under the moonlit sky") and shared friendship and delicious pie and ice cream on the Bracy's porch.



Photos: Louise and Stan Duda provide light for Ann Vanneman and Paul Sgalia as they read aloud The Highwayman by Alfred Noyes



The moon rose in the east, over the Shrewsbury hills, large and red, and Louise Duda provides a light to Davis Rudisill who shared facts about the moon with the crowd. ~Photos & article by Vicky Arthur



L to R: Thomas, Hartigan, Paul Sgalia, Aaron Schnieder, Vicky Arthur, and Aaron Korzun.
Missing are Boaz Cohen and Jean Marie Walker

Shrewsbury Outdoor Concert Thank You

To the Many Volunteers and Audience Members who made the Meetinghouse Concert Series work so well for its 3rd Season....Many Thanks. We are proud to live in a town that is small but busy, and comes together in times of need and also to make some joyful noise, dance and picnic with their families, and let those kids roll down that hill by the hall! What's really true is that the whole community and our friends from neighboring towns make it work. Folks tidied up the bathrooms, never left their garbage on the lawn, followed our directions for parking, and equally importantly, were so generous with their money to support the musicians who come here to perform for us. Your generosity allowed us to also make a significant contribution to the Meetinghouse, and for all of this, we are Thank Full! ~Vicky Arthur and Paul Sgalia

SHREWSBURY DAY DREAM TEAM

Ann Vanneman, Bob & Hallie Knudsen, Catharine Carrara
Chryl Martin, Lavinia Seide, Liesbeth van der Heijden.
Linda Fontana. Penelope Weiss. Sharon Winnicki. Stacy
Harshman. Tracy Crelin. Vicky Arthur , Betsy and Grace

- ◇ The Gracious Church Ladies: Julanne Sharrow, Lynette Over, Roxanne Ramah, Sue Kelley
- ◇ Grillmasters: Dany Cote, Greg McGown
- ◇ Our Selectmen: Aaron Korzun, Jolly Wyatt, Steven Nicholson
- ◇ Photographers: Brian Winkler, Chryl Martin, Gina Stewart
- ◇ Traffic Squad: Aaron Korzun, Aaron Schneider, Jolly Wyatt, Steven Nicholson, Vicky Arthur, Officer Greg Ricketts
- ◇ Shrewsbury Volunteer Firemen and Shriners

SHREWSBURY DAY THANK YOU

Thank you Paraders, Cheering Crowd, Skywriter Sign Co. and EVERYONE who made Shrewsbury Day 2022 happen.

For your wonderful gifts, special thanks to:

DJ Brett Myhre MC	Evening Song Farm
Screen Porch Revival	McGown Mowing & Muscle
Stewarts Ice Cream Shoppe	Rob McKain

And thanks everyone for your generous Lunch Donations

which will fund **Shrewsbury Day**

Sunday, September 17, 2023.

Best Wishes from Betsy and Grace



Friends and family
Gather to celebrate home
Our Shrewsbury Day

Haiku by John O'Dowd

NATURE'S TURN, LLC Gerry Martin Artistic & Functional Wooden Bowls



Vermont Crafts Council Open Studio Weekend Saturday & Sunday

OCTOBER 1 & 2, 2022
10am - 5pm

998 Lincoln Hill Road,
Shrewsbury, VT 05738
(802) 492-2244









Photos and Collage by Chryl Martin

Shrewsbury Historical Society

www.shrewsburyhistoricalsociety.com

History Changed on September 8, 2022

This is a sad day for many of us who loved the Queen of England. Elizabeth was 2 years older than I. So you might say I grew up with her. In the basement of my parents' home on Long Island, my Dad had a workroom where he would build model airplanes with my younger brother. He had a special place on one wall to hang things of interest. One was a drawing of the ocean liner Queen Elizabeth and the other a New York News full color spread sheet in their Sunday rotogravure section of the King of England, his wife and two young daughters, and I would stare at that and wonder what it might feel like to be a princess. This was in the thirties.

I grew up and followed Elizabeth and her husband and birth of their two children, Charles and Anne. In 1952 I was in Germany visiting my husband as he was serving in the Army stationed there. We had a small radio in our one room apartment. The news came on and the world was shocked to hear that King George VI of England passed away and at this time Elizabeth and Philip were in Africa on one of their visits representing the royal family. Elizabeth had to go home and assume the role of Queen. I watched with fascination as she received the title at her Coronation the following year. This was in the fifties.

And what a gracious Queen she was. In all of the wonderful movies and TV appearances shown today I was amazed to learn how many U.S. Presidents she visited. Thirteen in all, with the exception of President Lyndon Johnson. She loved her horses and dogs. Along the way another two children were born. She loved horse races and attended the Derby on one trip and a baseball game at another when in the United States. She endured all the trials and tribulations of a long life and still had that sweet smile at the end.

She was also gifted with a sense of humor and who would not be charmed at the sight of her enjoying tea and marmalade sandwiches with Paddington Bear at her Jubilee in June or pretending to parachute out of a helicopter with James Bond into the Olympic Stadium in London in 2012.

Of course her health in this past year has declined and I feel she went downhill with the loss of her beloved Philip. I will miss her.

Dues are due

The Historical Society understands that because of the two years of a pandemic it is hard to get back into the routine again. Since we are so late in getting started again, we respectfully request that members will pay up on their dues as according to our by laws only those who are paid up in their dues can vote on issues. We will have a change in officers at the last meeting in October and I am sure you will want to vote. Your dues will be counted for next year also. Normally the dues count from January to December of the same year. They remain the same, \$10 for an individual, \$15 for a family, \$30 for contributing and \$125 for Life membership. Please send check payable to the Historical Society to treasurer Catherine Carrara, 2544 Northam Road, Shrewsbury, VT 05738

~Submitted by Ruth Winkler



Doug and Rachelle Patton greeting Vaidehi at the airport

Shrewsbury Welcomes Vaidehi Sangrod

The Rotary Youth Exchange Program gives curious and adventurous high school students the opportunity to spend a year abroad, and to become immersed in another culture and language. The Wallingford Rotary Club (including members from Shrewsbury and other surrounding towns) sends students from and to Mill River Union High School. Many young people from Shrewsbury have benefitted from the program in the past. In recent years, before Covid suspended exchanges, Rotary students from Belgium, Spain and Sweden stayed with families in Shrewsbury, learning about our country and community.

This year, MRU's "Inbound" student is Vaidehi Sangrod from India. She is staying with the Patton family on the Spring Lake Ranch campus. India is a large and diverse country with many regions and languages. Vaidehi is fluent in English, Hindi and Gujarati (the language of her home region). She has already enjoyed local concerts, apple picking and Shrewsbury Day. At school Vaidehi is involved with the Interact service club, and has landed a part in the upcoming Stage 40 production. She loves our Shrewsbury community already. We hope you will get a chance to meet and visit with Vaidehi in the weeks ahead.

~Article by Barry Griffith



Late September & Early October: It's mating season for the moose, so watch out for them on the roads as they cross for action on the other side!

The Shrewsbury Community Church



Compiled by Sue Ransom-Kelley

We've returned to the Center Church for all Sunday Services! All are welcome to join us on Sundays at 10:30am on the second floor of the Meeting House in Shrewsbury. You are sure to hear an uplifting message, beautiful music provided by musicians Marcos Levy and Roxanne Ramah, meditate, and visit with our neighbors in this beautiful sanctuary!

Community Food Shelf

Free Community Food Shelf at the Library in the front entry way. Those in need are welcome to help themselves any time the Library entryway is open. Limited hours are: Mon 10am-12noon; Tues 7-9pm; Wed 10am-5pm and 7-9pm; Thurs 7-9pm; Fri 10am-12noon; and, Sat 10am-12noon.

Food Delivery and Assistance If you are unable to get to the Food Shelf at the library in Shrewsbury, we will deliver groceries to you. If you need items which are not available on the shelf we can provide grocery gift cards. Call Karen at 802-558-5991 or Sue at 802-779-4825 or 802-492-3738.

Community Needs

- Wedding, Funeral or Memorial Service Requests: Contact Donna Smith 802-492-3367; or Sue Kelley 802-492-3738, 802-779-4825
- Community Helping Hand Requests: Contact Donna Smith 802-492-3367; Sue Kelley 802-779-4825, 802-492-3738; or Karen Lorentz 802-558-5991. Shrewsbury residents experiencing financial hardship. Assistance can be given for basic needs (food, heating, gasoline, etc). If you or a neighbor are in need, please let us know!
- Pastoral Care, Home, Hospital Visitation, Outreach Requests: Contact Roxanne Ramah 802-492-3675 or Ruth Kinne 802- 775-5318.

SUNDAY FUN DAY

SHREWSBURY COMMUNITY
CHURCH ROOMS

10:30am -11:30am
NATURE OUR WAY
AGES 4YRS AND UP

PROJECTS, STORIES, SNACKS
AND OUTDOOR FUN



Community Church Calendar

- Sunday, October 2, @ 10:30am Fun Day Program for kids. Worship Service with Holy Communion led by Wendy Savery.
- Sunday, October 9, @ 10:30am Fun Day Program for kids. Worship Service led by John Hill.
- Sunday, October 16, @ 10:30am Fun Day Program for kids. Worship Service led by Wendy Savery.
- Friday, October 21, @ 5-6:30pm Take Out Community Lasagna Dinner Order Ahead.
- Sunday, October 23, @ 10:30am Fun Day Program for kids. Worship Service led by Wendy Savery.
- Sunday, October 30, @ 10:30am Fun Day Program for kids. Worship Service led by Wendy Savery.

Friday, October 21 Take Out Lasagna Dinner!



Pick up your Dinner from 5pm-6:30pm
Shrewsbury Meeting House
Vegetarian Option Too!

Call Lynette to Order your Dinners
802-683-0631

Cost: Free Will Donation

Proceeds to benefit our
Community Sharing Project
which provides food and gift cards to families in
Shrewsbury during the holiday season.

Hosted by Shrewsbury Community Church
Unable to pick up your dinner?
Let us know and we will
Deliver it to you!

FOR SALE

STHIL FS110-Z brush cutter with bicycle handle
and string trimmer attachment, lightly used: **\$40**

NEXEN WINGUARD WINSPIKE SNOW TIRES
265/70R/17E set of 4
\$80

Contact Rich Biziak (802-492-2255)
for more information

ACTIVE AND UNUSUAL NATURE SIGHTINGS IN SHREWSBURY



Critter Castle

Biggest wasp nest in Shrewsbury 2022 challenge

Does anybody have one on their property that's larger?

Are they wasps or hornets or? There is (reportedly) one queen and a whole bunch of worker bugs. They die off, usually when temp stays below 50, and the queen and all of her little ones.... . New critters will not occupy or build near the former apartment....terrible waste of housing! ~Nils Ericksen

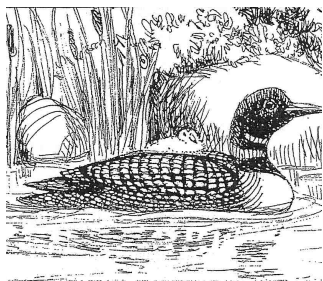
Not in the Running!

At the last Outdoor Concert this nest was located about 20' up on a maple tree in front of the Meeting House. It was very active before a mysterious nocturnal removal just before Shrewsbury Day! ~CYM

Moose on the Loose!

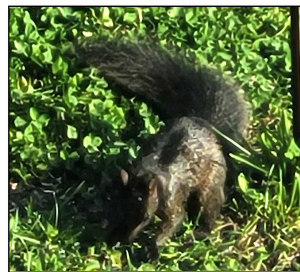
I tell myself everyday how very fortunate I am to live in Vermont, especially in a place such as Shrewsbury. My husband, dog, and I just recently moved to the area and though we are accustomed to seeing beautiful bears, majestic owls, flighty foxes...This experience was a first for me. I was born and raised in Vermont (just around the corner in Clarendon), and after over three decades of living in Rutland County, I had my first encounter with a wild moose! On Monday evening, 9/19/2022, it was what I would call your typical pre-autumn evening. Pouring rain, warm, cloudy.

Despite the rain being a steady reminder for me to take my time driving up Cold River Road, I am also well aware that you should not be driving fast (regardless of the weather conditions), and that evening was a shining example of that. I thank the Universe I happened to come upon this magical creature. A male moose was ambling up a driveway and stopped at the edge of the road. I also stopped my vehicle a good distance away, first thinking a big truck was pulling out into the road, then "oh wait no I think that's a bear, oh wait... it's a MOOSE!" My heart was pounding, as we had a staring contest for what seemed like minutes but in reality it was only a few seconds. I was able to grab my phone and snap a few shots and short videos as he crossed the road over into the woods. It was one of the most amazing sights I have witnessed. It was also a very good reminder for me to always be on the lookout when driving our beautiful roads, take my time, and appreciate the nature all around us. ~Submitted by Kate Tibbs



Loon Count

Family of four loons at Spring Lake this summer!



Grey, Red, and now Black

It's hard to see...but he's there. It's a black squirrel captured with the camera of Bob Snarski.



Leucistic, piebald or albino?

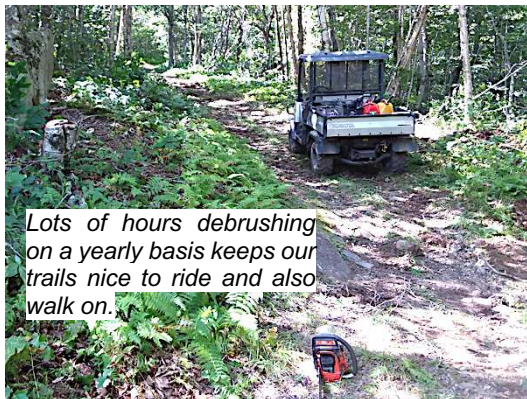
This rare adolescent white wild turkey was sighted roaming with its Shrewsbury flock.

~C.Martin



SNO-BIRD NEWS

The Sno-Birds had their first meeting of the season last week. We had several members present. We discussed how the raffle went and some changes we will think about for our next fundraiser. We also talked about the VAST Annual Meeting. The main item we wanted everyone to know that the dues stayed the same as last year. Maine and N.H. both went up but we did not.



Lots of hours debrushing on a yearly basis keeps our trails nice to ride and also walk on.

Dave has been out debrushing our trails with the help of club members. We did 1/3 of our trails with the excavator and brush head. We have some hand work to do on some trails, some of that has

been done already. All of our sign posts are in the ground, now we wait to get the signs. We are waiting for the proofs to come back and then the sign will be made. It does not seem like much but it is a big project to make sure that everything is correct. It will be really nice to have the new signs.

We have gotten some of the maintenance supplies for the Tucker and we will continue getting it ready for December 15th, the first day of the season. Shrewsbury usually has enough snow to start on the first day, not always but usually we do.

Dad opened the gate on the Clement Shelter Road on the 15th so the hunters and others can use the road as per the agreement with the town. It gets closed on April 15th for the summer. Working on the trails you can really start to see signs of fall and that is only normal as the first day of fall is this Thursday September 22nd. Most people I have talked to say they are not ready for it but I think it happens this way every year. I hope everyone can enjoy this early part of the fall season! Check us out on our website and facebook page. Subscribe to get our up to date info sent to your email.

Submitted by Roy Arthur



PVF Services LLC

Excavation, Trucking, driveway repair, site prep, building removal, brush grinding and much more!

Neal and Chad	1368 Lincoln Hill
Cell 802 236 8105	Shrewsbury Vt, 05738
Office 802 492 3364	sharrowmaple@gmail.com



Time to stockup your freezer?

Don't forget our Grassfed Grassfinished

- * Stew Beef
- * Ground Beef
- * Roasts
- * Steaks
- * & so much more

2450 Lincoln Hill Rd
Shrewsbury, VT 05738

SmithMapleCrestFarm.com
(802) 492-2151



THE NEW LEARNING PROJECT

CHOOSING TO EXPERIENCE OUR POTENTIAL

MUSIC LESSONS -- Guitar , Piano , and more
RED CROSS COURSES -- First Aid, CPR, Lifeguarding
SWIMMING INSTRUCTION
(More services at website)

STUDIO IN CUTTINGSVILLE VT
www.TheNewLearningProject.com
TheNewLearningProject@gmail.com
802.492.3208

Marcos Levy
Instructor with over 30 years
of Experience

Handcrafted. Local. Pure.

**MAPLE SYRUP, CRAFT BEER,
SPECIALTY FOODS, ARTISAN GIFTS**

**Thursday-Saturday 11-5
Sunday 11-4**

www.stewartmaple.com

**5444 VT Route 103
Cuttingsville, VT 05738**

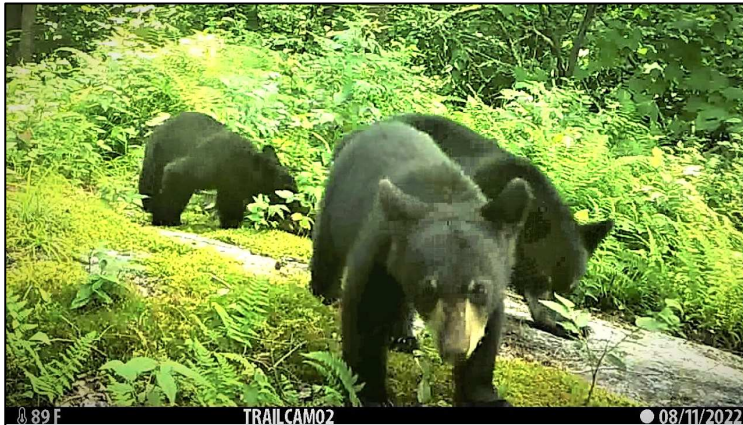




Shrewsbury Conservation Commission Trail Camera Picture of the month

This month we have trail camera captures from Michelle Greene of a doe enjoying apples on the edge of her yard. Michelle also sent a picture of a very late season young fawn. Linda Shelvey captured bear cub triplets enjoying blackberries!

Do you have a wildlife picture to share? A track for us to identify? Send your trail cam, phone or camera picture to Linda Shelvey, Lpurdyschel@gmail.com. Please include your location in your email, so we can include your data on our Wildlife Map



This hummingbird is triggering Scott Garren's security camera, and Scott says that's a huge wasp nest hanging from a tree on the left side of the photo!

Tree Knowledge Gained and Shared

All my tree informant had told me was that the tree was located on the first "pine island" between two boardwalks (across wooded swampland) on the newly built West Rutland Marsh-Whipple Hollow Trail, that it was a red pine, and the only one of its kind in this well established several acre mature forest. He also noted that if we found it we would be well rewarded for our efforts. To a forester that is like dangling cat nip in front of a cat and even though most visitors there are looking for birds (it is identified as an Important Birding Area by the Audubon Society), tree folks will be equally as impressed with the trail.

So armed with this limited knowledge and a set of additional eyes from an observant wife, off we went across the first boardwalk and entered the "pine island" of towering white pines and nearly as towering hemlocks mixed in with the occasional red maple, yellow birch, red oak, black cherry, beech, and ash. It's almost a cathedral like setting with complete shade, little disturbance from people, and little understory as well. Large woody debris litters the ground from fallen white pines but little else interfered with the visibility in searching for our single tree of its kind. Based on a lot of forestry knowledge about trees and their relationships to each other we carefully examined the island and there it was, right where a forester would expect to find it. And we were rewarded for our efforts.

A short time later, while relaxing trail side and reflecting on what the tree had just given us, four shirtless boys came dashing down the trail oblivious to either trees or birds followed at a slower pace by three young girls and one adult chaperone trying to keep the group together. All were part of a Shrewsbury Mountain School adventure celebrating the last of summer vacation. Heather Cote (daughter of forester Randy Page) had taken them earlier to the school open house to meet their teachers and chat with the new dynamic and excited principal Kristin Cimonetti, followed by a swim at a local West Rutland swimming hole, and concluding with a walk/run on our now shared trail. Since the girls seemed far more interested in listening and learning we shared our new found information about the red pine and soon all four were surrounding the tree closely examining bear scars and tooth marks where it had "marked" its territory. We are used to seeing scarred



beech trees in our Shrewsbury and Killington forests. These are feeding trees climbed by bears to capture the beech nuts in the crowns. They leave claw mark evidence of climbing and also often break off branches in the crowns to pull the nuts to them for eating. Marking however is often restricted to softwood trees (thinner softer bark) and balsam fir seems to be the tree of choice. But bears are bears and are wide ranging in their habitats including this area of West Rutland which has neither large areas of mature beech nor balsam fir. Sharing knowledge about our red pine made our day and also those who got to look at it. It was good preparation for exploring the coming fall foliage season. I could tell you where the red pine is but that would take the adventure of exploring out of it. So, some nice fall day take a look for yourself or ask three SMS students and/or Heather about it.

~Submitted by Gary Salmon, Tree Warden



Champlain Philharmonic

The Champlain Philharmonic conducted by Matt LaRocca, presents its Fall Concert Series on Saturday, October 22 at 7:30pm at Grace Congregational Church in Rutland and Sunday, October 23 at 4pm at Town Hall Theater in Middlebury.

This community orchestra has quite a Shrewsbury following and includes four current/former townspeople, Kristi Bragg, Megan LaChance, Roxanne Ramah, and Mary Barron. The program will feature music reflecting all the different ways we have love in our lives, including Tchaikovsky's Romeo and Juliet Fantasy Overture, selections from Bernstein's West Side Story, Holst's Jupiter from the Planets, among others. More information is available at <http://champlainphilharmonic.org/>.

~Submitted by Roxanne Ramah

REINBOW RIDING CENTER NEWS

August went out with a bang for Rainbow Riding Center. Thanks to a \$25,200 donation from Troy Caruso's A.C.T. (Assisting Children Today) charity, we will be able to provide many more children with therapeutic horsemanship lessons. In addition, thanks to the generosity of Tina and Glen Tatangelo for sponsoring a fundraising event and Troy Caruso for hosting the event at Fox Run, RRC was able to raise an additional \$11,953 to help us continue our programs for anyone age 3 to whatever. The event was terrific, and everyone had a great time.

We would also like to thank Chef Andrew Molen for the food, Krishna Guthrie for the music, Bloom of Shrewsbury for the floral arrangements, the staff at Fox Run, our very special volunteers and everyone else that joined us that evening. We hope to see you all again, and many more, next year at the second annual fundraiser we are planning for June. Put it on your calendars.

Please watch our website: rainbowridingcenter.org, and follow us on Facebook, Twitter @RainbowRiding and Instagram @rainbow_riding_center. Contact us at programs@rainbowridingcenter.org or 802-236-2483. ~Submitted by Janet Upton



Second Sunday in March: Spring Forward,
The U.S. begins daylight savings at 2am



First Sunday in November: Fall Back--
The U.S. ends daylight savings at 2am



DEAR MOTHER EARTH

An Advice Column

WAIT! Don't Put Up That Sign!!

Dear Mother Earth,

I wonder how you feel about all of the disposable, plastic political signs that sprout up like unsightly weeds on our lawns every time there is an election. When I was a child growing up in a largely second-generation immigrant urban neighborhood (a mixture of mostly Irish, Italians, and Poles), I remember asking my mother who she would vote for in an upcoming presidential election (I believe it was Humphrey versus Nixon). I was surprised when she responded that her vote was private and she would not share it with me. She said that she and my Dad never even told each other who they were voting for! They believed in the privacy of the voting booth. When I compare that attitude to the public display of political signs on almost every lawn in the country these days, it makes me wonder if returning to the privacy of the voting booth would reduce (or eliminate) the conflicts in our communities. Does it really help me to know who my neighbor is voting for, or does it cause me to make assumptions about my neighbor that may not be true? Signs define us narrowly and divide us broadly. AND... they fill up our landfills with forever chemicals for our future generations to endure. How can we return to the uncluttered, simple, private approach to voting that our parents and grandparents enjoyed?

Sick of Knowing in Rutland

Dear Sick of Knowing,

You make such excellent points about the ubiquitous political signs that litter humans' lawns like invasive weeds! It is hard for me to see the point of all this trash, just to make sure everyone knows how you will vote. Is it really that important to advertise your opinion or is this just another example of blind acceptance of a trend that has been foisted on citizens by the million dollar campaign industry? Resist! Most lawn signs are made of corrugated plastic that cannot be recycled. They are definitely filling up precious landfill space and when you consider the sheer numbers of them, it seems like a very irresponsible practice. Manufacturers of these signs will tell you that they can be reused, but by whom? Do humans take them back to the printer or to the candidates (who rarely come around to collect them). Do they ever get reused? Painted over with a new message? I would guess rarely.




In the past, signs like these were made out of corrugated cardboard, a highly recyclable material. Once again, the practices of the past can show us the way to the future! If you feel the need to publicize your vote, pressure candidates to use corrugated cardboard signs only. Signs with mixed materials become much harder to recycle, so cardboard coated in plastic is not the answer. If these signs didn't last quite so long, that might be a good thing as well! As always, it is on you, the consumer of these products, to push back and say "NO" to plastics of any kind. If a candidate or a cause wants to use your property to advertise for free, they should meet your requirements for environmentally safe signage.

Just as importantly, however, I agree with you that fewer signs could lead to happier, friendlier neighborhoods. So think carefully before you put up that sign!

Dreaming of peace on the planet, ~Mother Earth

YOUR TICKET TO BETTER HEALTH

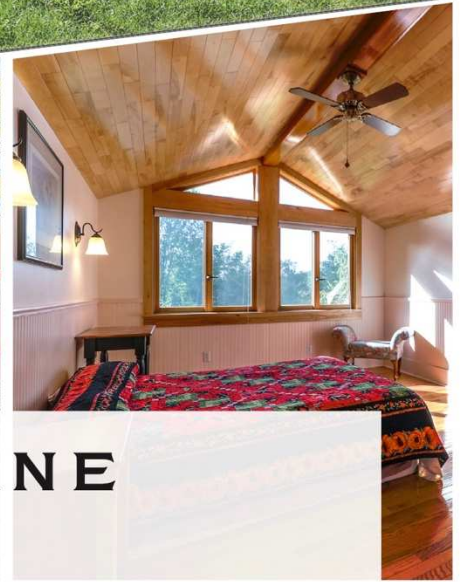
Sparking Imaginations for Over 22 Years!

Chiropractic Care, Applied Kinesiology,
Therapeutic Massage/Bodywork,
Holistic Health Education, Nutritional
Supplements, Coaching, Worksite Wellness

Serving the Community with Excellence and Compassion Since 2000

68 South Main Street Wallingford, VT • 802.446.2499
uthrive@vermontel.net • thrivemont.com



97 STEWART LANE SHREWSBURY

Offered at \$599,000

5 BEDROOMS · 3 BATHROOMS · 2,523 SQ FT · 8+ ACRES

**Expertly constructed contemporary
accessible to Killington, Okemo and Rutland.**

SOLAR PANELS · GARAGE · OUTBUILDING · 4,000 FRASER FIRS

**Located in the village of Cuttingsville, this property
has a long history as a holiday tree and wreath farm.**



GAIL BEARDMORE

OWNER | BROKER

126 MAIN ST, SUITE 1A, LUDLOW, VT

+1 (802) 975-0338

OKEMO@EVREALESTATE.COM

©2022 Engel & Völkers. All rights reserved. Each brokerage independently owned and operated. Engel & Völkers and its independent License Partners are Equal Opportunity Employers and fully support the principles of the Fair Housing Act.



ENGEL & VÖLKERS
Okemo



It was a big month for sustainability education at the Shrewsbury Mountain School!

More than a dozen Shrewsburies of all ages came out to broadfork, move compost, fill beds, lay cardboard and mulch, and clear back forest encroachment at two garden work parties this month. The new 11 low-till garden beds, 8 raised & 3 in-ground, have been seeded with oats and rye cover crops that will winter kill and make for a nice early spring space to create with students!



(SMS students plant fruit trees in the schoolyard)

Thank you to all the community members that joined us.

On September 16th, ReTreeUS came all the way over the CCC road with 12 fruit trees for Shrewsbury. All SMS students got in on the fun digging holes and planting apples, pears, and peach between the playground and the field. Class by class throughout the day, we created an orchard that, with the care and nurturing of the school community, will thrive for many years feeding and inspiring generations of students.

These garden and orchard days brought together students and community members for projects that will grow for many years!

For more information about SAGE: contact Stephen Abatiell at educate.sage@gmail.com, Joan Aleshire at 492-3550 or visit www.sagevt.wordpress.com. Follow us on Facebook for up to date event details at Shrewsbury SAGE.

Submitted by Stephen Abatiell



Pierces Store Chili Cookoff
October 1, 2022
5:30PM until 7:30PM



At Pierce's Store
2658 Northam Road
Shrewsbury, Vermont

Chefs and Tasters Welcome!!!

Chefs – Your fantastic Chili could be the winner!
All varieties of Chili are welcome!
Entry Fee – \$10.00 per Chili

To get Contest rules and registration, you can:
 Visit Pierce's Store
 Download at <http://PiercesStore.com/Events>
 Or, request by e-mail to:
Pierceschilicookoff@gmail.com

Tasters – You will be the judges!!!
Taste the wonderful variety of chilis and vote for your favorite!
Entry Fee - \$10.00

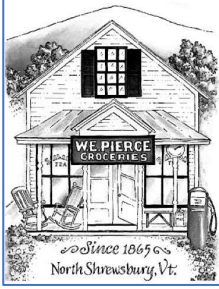
Prizes – Bragging Rights, plus:
1st Place Prize - \$25 Pierce's Store Gift Certificate
2nd Place Prize - \$15 Pierce's Store Gift Certificate
3rd Place prize - \$10 Pierce's Store Gift Certificate

Pierce's Store will be selling soft drinks, beer, and wine
This event is a fund-raiser for the Shrewsbury Co-Op at Pierce's Store

Community

Community is art, creation, engagement
 More than just a conscious arrangement
 Things fall into place as a matter of course
 How this can happen, is it comes from the source
 A font of happiness, the wellspring of life
 Where conscious inclusion frees us from strife
 All the world' a stage and we are merely players
 When people come together is it answered prayers
 Prayers to your god or just to the sky
 From wherever come answers it matters not why
 What matters is that we are a community
 When united as one we build strong immunity

By Thomas Hartigan



NEWS FROM PIERCE'S STORE 802-492-3326

Bob Knudsen, Manager

Happy Halloween and Foliage Season!

Fall is in full swing, and with the leaves changing and ghosties afoot, we are here to help you get ready for trick or treating!

Any kids who come by the store on Halloween weekend (October 28-31) in costume will get some free Trick or Treat candy!

CHILI COOK OFF

The first big event we have to kick off October is our Chili Cook off! Come have a taste of what your fellow Shrewsberries are cooking to keep warm this season, and you can even vote on your favorite! Do you think your chili could win, or do you just have a recipe you would like to share? We are still accepting contestants, with gift cards to the store available as prizes! We will also be serving beverages for attendees of all ages. The event starts at 5:30 pm on Saturday, October 1, so come on by!

BRAZILIAN COOKING CLASS

Join us as we feature Brazil this fall with a three-course dinner, beginning with the Brazilian national cocktail - Caipirinhas! That will be followed by Bacalhau a Gomes de Sa (salt cod, potatoes, onions, eggs, and olives), Feijoada (Black Bean and Pork Stew), Rice, Salad, and Brazilian sweets. Eight students will be led by Heather Shay at her home to cook up the meal, and then they will sit down to dinner and enjoy their work. The date will be decided by the students but probably in October. The cost is \$35 and the proceeds go to Pierce's Store. Call Heather Shay at 802-492-2284 or email to www.heather@garrenshay.com to reserve a spot. Space is limited and is first-come, first served, so be sure to do so immediately!

UPDATES AND NEWS

If you haven't stopped by the store lately, you might be surprised to see the new layout! We have moved our consignment shelf to a higher visibility location to help showcase our talented local artists and neighbors, and we are in the process of making even more space for not only foods and goodies, but also for a space for our community to come and enjoy! The outdoor seating area will stay out through the month, as weather allows, and we are working on a way to make some seating available in the store so you can continue to enjoy your lunches and snacks before heading back out.

We have a few new faces to see behind the counter! Sofia Tudzarov will be acting as assistant for the next few months, and has already learned a great deal about ordering, merchandising, and is the mastermind behind the new Consignment display! Joining her is our newest volunteer, Joni Martin, who is commuting all the way from Rutland to help us out! She is also eager to continue to expand her role and has already contributed in a big way to helping get the operations cleaner and more efficient. Last but not least, a face who should be familiar to most people in town, our friend and neighbor Lee

Wilson has also agreed to help us out with register coverage and stocking. The store is important to Lee on a personal level, so he is taking great care to help ensure our continued success with his diligence and personal touch.



HELP WANTED

Even with the new staffing, we are always still looking for additional volunteers and employees to help run the register and keep the store running smoothly. A long term assistant manager will be needed in the New Year, so why not come on board now and learn the ropes in advance? This is a great starter job for young'uns, a good side gig for people looking for something to do, and a fantastic place for retirees to come visit with your friends and neighbors while helping your community. For more information, please stop by or email pierces.store@gmail.com.

As always, thanks for supporting local co-ops and businesses and we hope **to see you in the store!**

**RIVERWOOD
LAWN CARE, LLC**

Fully Insured

Patrick Angstadt
802.770.0433
riverwoodlawncare@gmail.com

Mowing, Trimming
Spring and Fall Cleanups
FREE ESTIMATES

The Times of Shrewsbury
P. O. Box 373
Cuttingsville, VT 05738

PRESORT STD
US POSTAGE PAID
SHREWSBURY, VT
05738
PERMIT NO. 2

To: Postal Patron

Donors are recognized for the remainder of the calendar year in which their donation is received. The *Times* is mailed to all residents of Shrewsbury and is also available online. The cost of printing and mailing is made possible through advertising and your donations which are very much appreciated. Donations can be made to: *Times of Shrewsbury*, P. O. Box 373, Cuttingsville, VT 05738. **THANK YOU!**

Larry & Lauren Abelman
Craig & Peggy Angstadt
Gary & Minnie Arthur
Roy Arthur
Steve Banik & Virginia Gundersen
Randell & Diane Barclay
Michael & Elizabeth Bedesem
John & Mary Beerworth
Nancy Bell
John & Linda Berryhill
Ludy Biddle
Rich & Cynthia Biziak
Dave & Debbie Blecich
Sandy & Kristi Bragg
Daniel & Virginia Buckley
Bruce & Liz Bullock
Jim Bulno
Carol Calotta
John & Linda Calotta
Herb Carrara
Jamie & Catherine Carrara
Larry & Lila Carrara
Michael & Laura Cashel
Connie & John Cioffi
Christina Clarke
Peter & Theresa Clarke
Scott & Lindsay Courcelle
Douglas Crowe & Amanda Ciaccio
Marilyn Dalick
Sally Deinzer
Rosemarie Pluss Dobler
Linda & Phillippe Ducrot
Stan & Louise Duda
Wayne & Lizzie Emmons
Nils & Pamela Ericksen
Kathi & Timothy Faulkner
Gene & Kathy Felder
Chuck & Luisa Finberg
Liz Flint

David & Jo Fretz
Scott Garren & Heather Shay
Jonathan Gibson & Eliza Mabry
Richard Gile & Sue Brown
Mark & Carol Goodwin
Peter & Pam Grace
Barry & Barbara Griffith
William & Patricia Gross
John & Betty Heitzke
Betsy Hinckley
Bob & Connie Hoelscher
Carmine Iannace & Rita Gyls
Martha Herbert Izzi
Jeffrey & Diane Jakobsen
Jack & Betsy Jesser
Ellen Jorgensen
James & Laura Keller
Robert & Judith Landon
Marcos & Turiya Levy
Mark & Connie Mackintosh
Ed & Clare Mangine
Gerry & Chryl Martin
Stephen & Patricia Martyn
Taffy Maynard
Lynn McDermott
Michael & Jennifer McDermott
Mill River Unified Union School District
Jeff & Pam Monder
Moody Family
Jack & Joan Mulqueen
Raymond & Cheryl Noble
Trish Norton
Fran Patten
Jack & Sharon Perry
Roxanne Ramah
Ed & Adrienne Raymond
Russ & Donna Reay

Reinbow Riding Center
Helen & Andy Richards-Peelle
Ridlon Family
Nathan Rudisill & Carrie Clancy
Ed & Judy Ryan
Thomas & Donna Ryan
Gary & Margery Salmon
Susan Savage & Irvin Gordon
Wendy Savery
Brian & Patricia Sedaille
Paul Sgalia & Victoria Arthur
Alan & Linda Shelvey
Shrewsbury
Community Church
Conservation Commission
Cooperative at Pierce's Store
Historical Society
Library
Outing Club
Volunteer Fire Department
Sirjane Family
Donna Smith
Bob & Sally Snarski
John C. Stewart II
Tim and Nancy Stout
Dirk & Judith Thomas
Paul & Sarah Titterton
Cady & Beau Tudzarov
Liesbeth van der Heijden
Ann Vanneman
Lana Vanucchi
Howard & Deborah Weaver
Michael & Phyllis Wells
Nancy & James West
Christel Wiedmann
Lee Wilson
William and Peggy Wilson
The Winkler Family
Mark & Connie Youngstrom

